

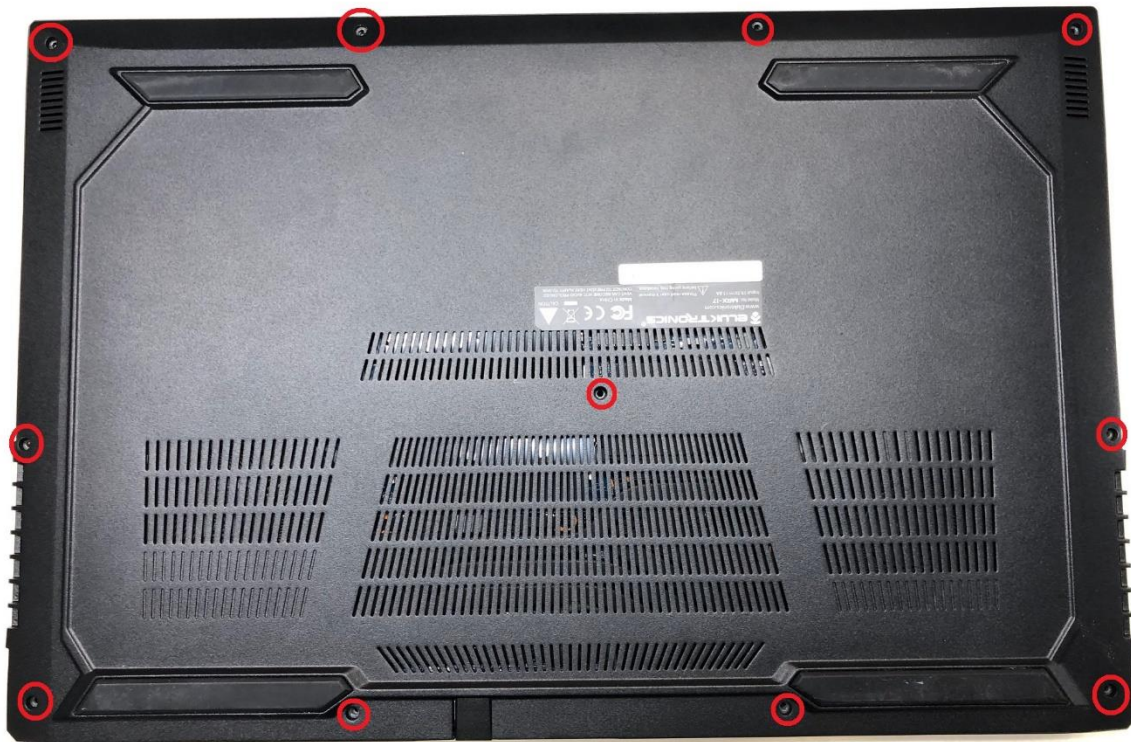


MAX 17

Keyboard Replacement

STEP 1

Remove the back cover. Screw holes are highlighted in RED:



STEP 2

After the back panel is removed inspect for any signs of dust or debris, now is the time to clean it up.



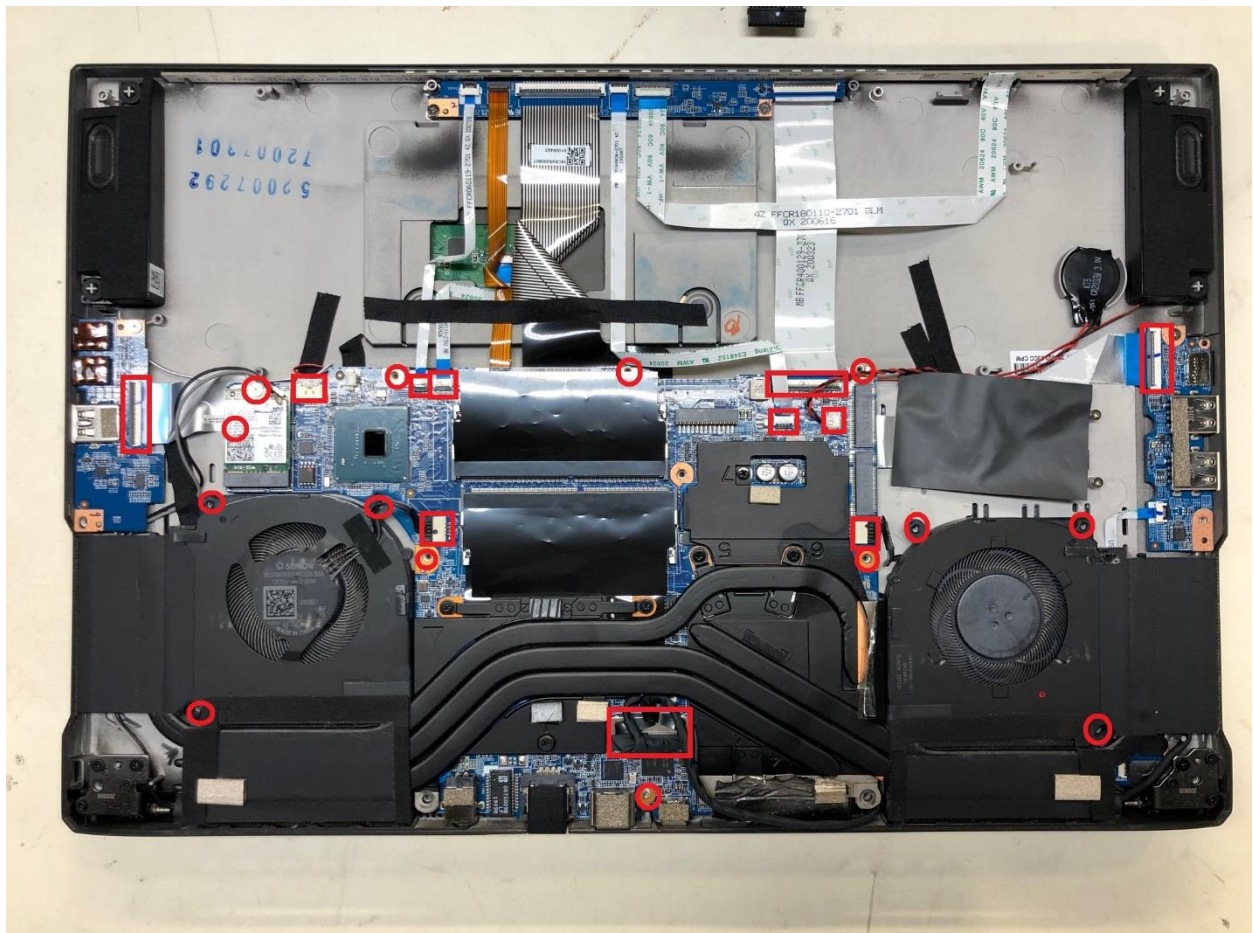
STEP 3

Remove the battery, it is held on with 3 screws and a plug



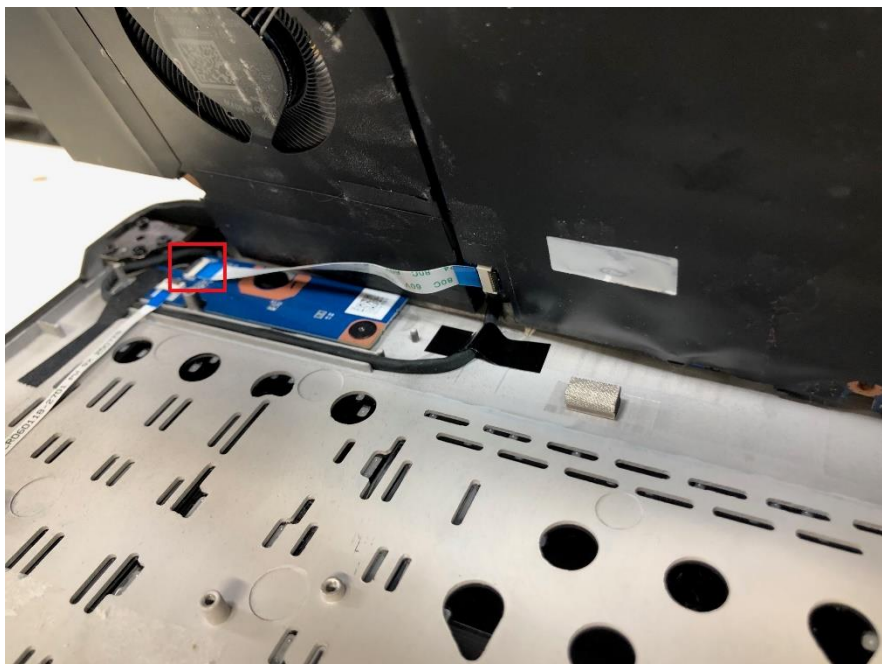
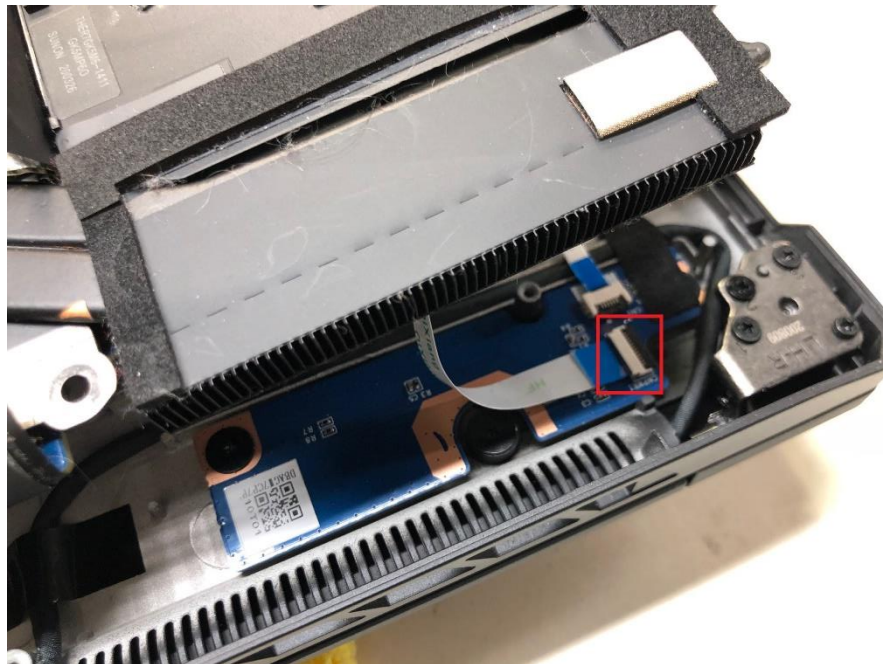
STEP 4

Remove all screws and plugs that hold on the motherboard. There is a screw under the WiFi card. Also, the ribbon cable to the right has a black cover over top of it. Be careful as this may prevent the motherboard from coming out. We would recommend after unplugging it to pull the cable back to the motherboard. The hinges holding on the cables have a black portion and a white portion, simply put your finger nail under the black portion and pull up. It should release at a 90 degree angle. The fans are held on with plugs and the speaker wire to the left is also a plug. The CMOS wire is a RED AND BLACK WIRE simply pull slightly and wiggle on the slightly



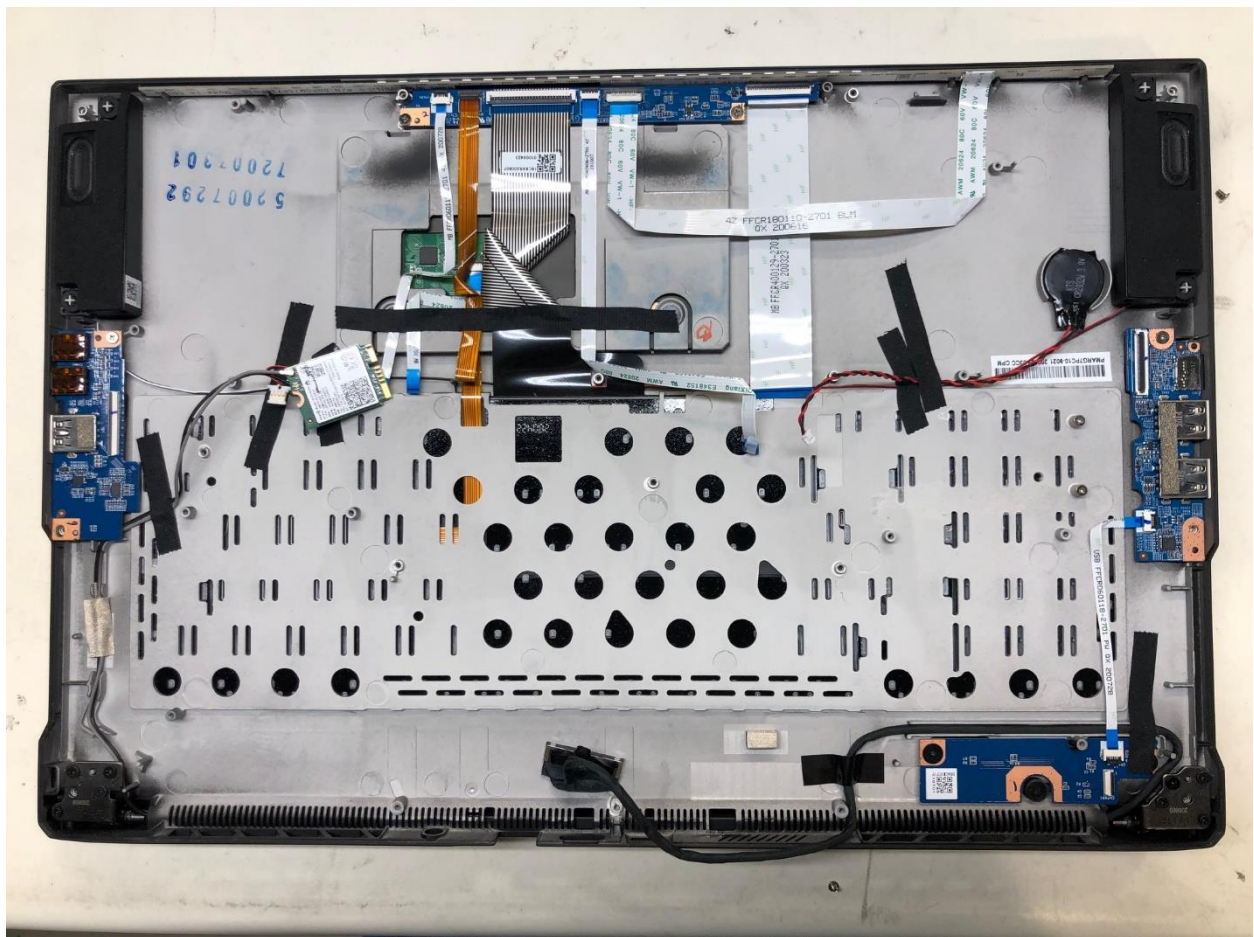
STEP 5

After the screws are removed the motherboard can be lifted off.
ADVISE, there is a power cable going from the motherboard to the
button.



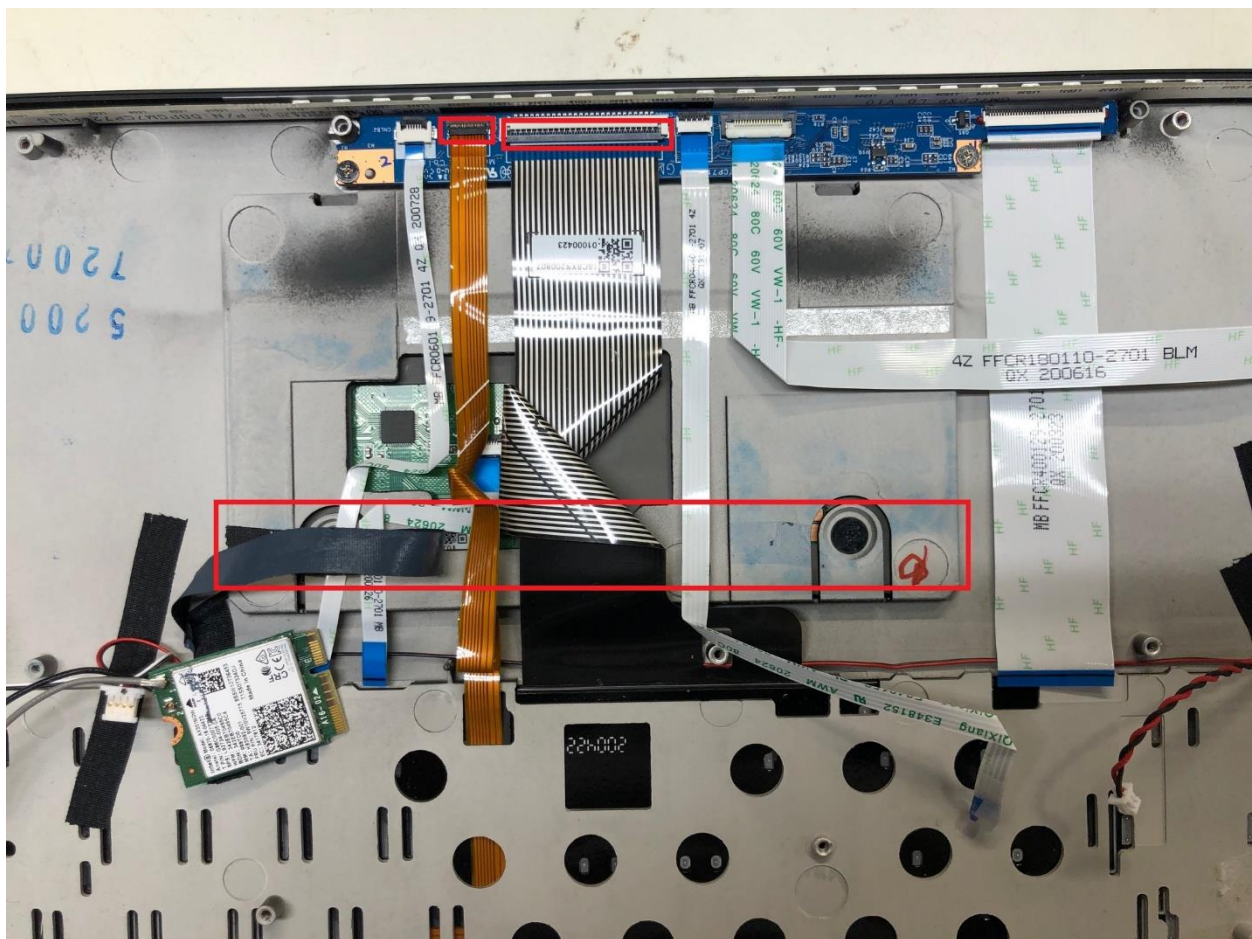
STEP 6

The chassis should now look like this, we will now focus on removal of the keyboard.



STEP 7

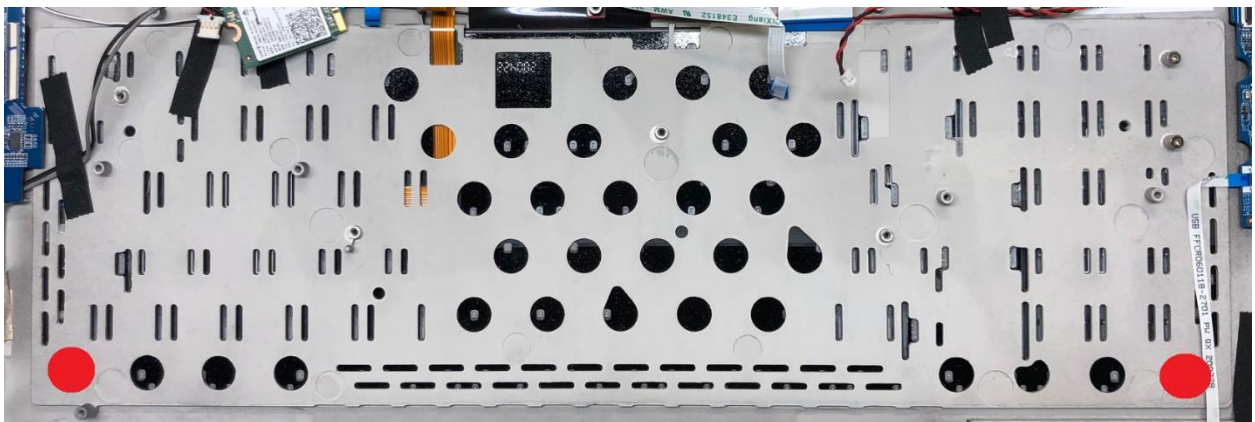
Highlighted in RED, the black tape covering the cables will need to be pulled back. The RGB color and keyboard cable will need to be unhooked and removed. Please note the direction in the cables are being pointed so when the replacement cables go in they can be bent in the same direction.



STEP 8

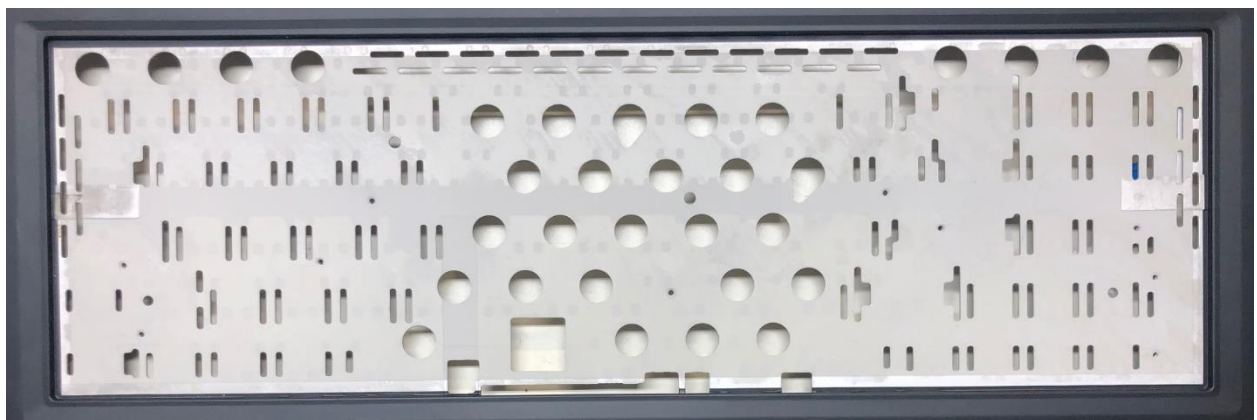
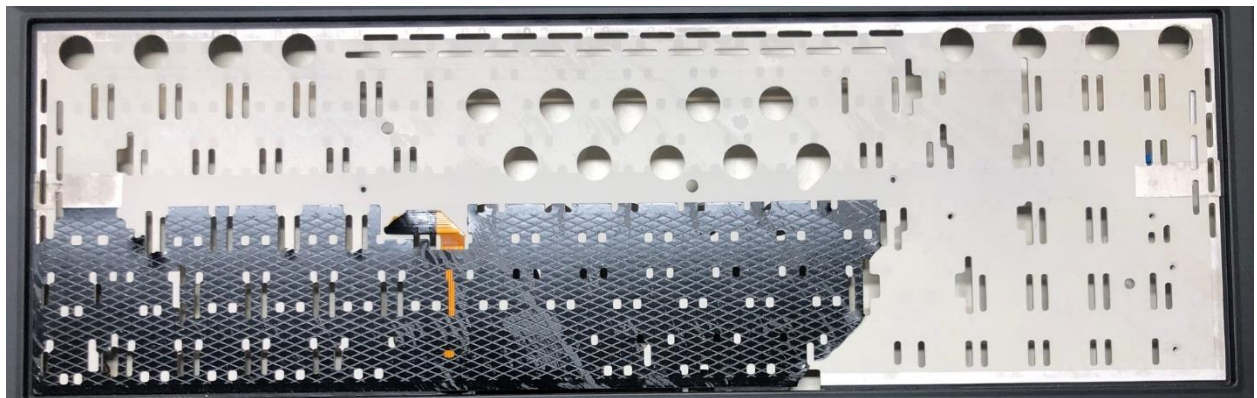
We would recommend this be done over the garbage.

You will push out the keyboard starting on one of the corners highlighted in RED, you will push up on the keyboard and rip it out from the top.



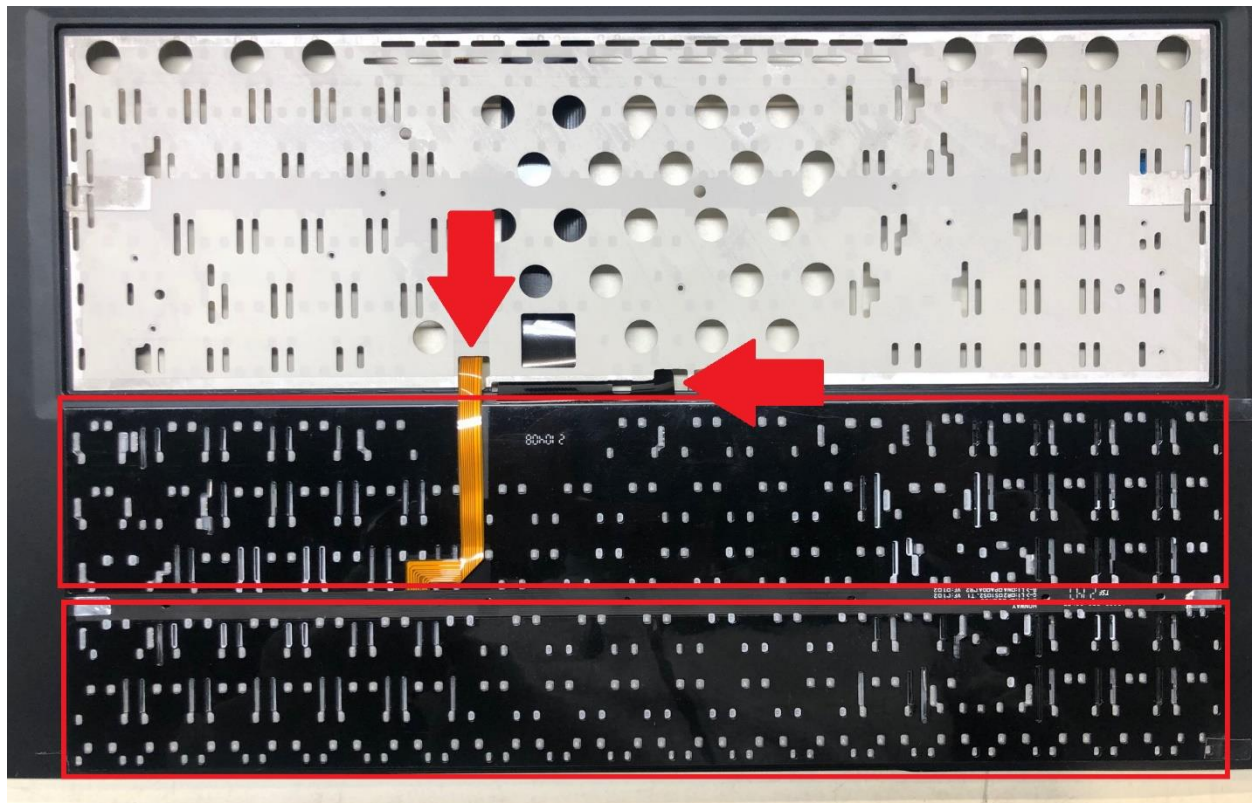
STEP 9

Prior to installing the replacement keyboard all prior keyboard debris should be removed and you should be left with a 'white' backing that it will be adhered to.



STEP 10

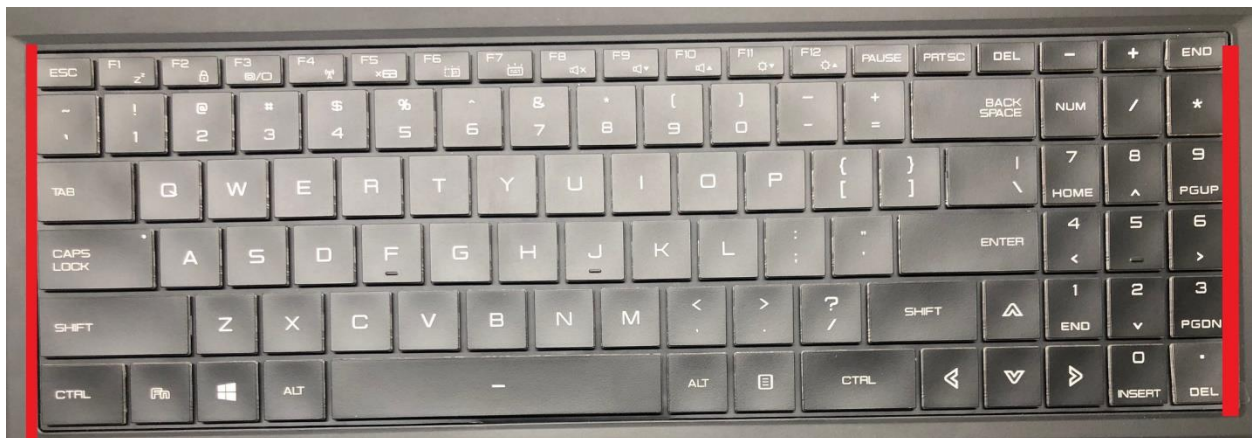
Upon reinstallation of the keyboard, we would recommend not taking off the liner until keyboard cables are routed properly into the chassis prior to taking off the lining.



STEP 11

After removal of the keyboard liner lift it up at a 90 degree angle and slide it left and right.

Please ensure that the keyboard is centered prior to putting it down all the way as you will damage the keyboard if you need to pull it back up.



To finalize the repair you can do reverse of the removal.

Please let us know if you have any questions or any improvements to add to this guide.

